

# CONSERVATORY GARDEN ARMCHAIR

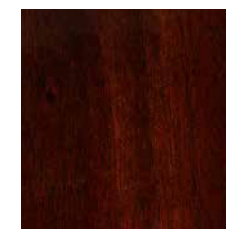
RALPH LAUREN  
HOME

DINING

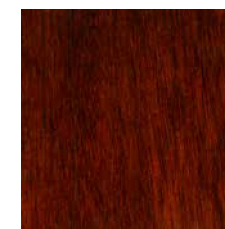


Emulating the silhouette of a classic English chair, this piece draws inspiration from 19th-century Regency-style design. The handcrafted frame is detailed with artfully carved leaf motifs, exposed wood arms, and nail-head trim. Supple leather upholstery affords a polished appearance and a soft hand.

#### Available Wood Finishes



Dark Mahogany



Medium Mahogany



Distressed Oak



Blanc De Paris



Satin Black

#### AFCSYPOL

**Height:** 45" / 114 CM

**Width:** 28 2/3" / 73 CM

**Depth:** 30" / 76 CM

**Weight:** 51 lbs / 23 kg

