

# ALFRED ARMCHAIR

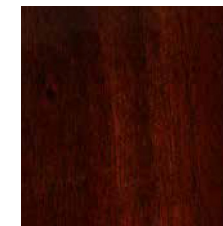
RALPH LAUREN  
HOME

OCCASIONAL CHAIRS

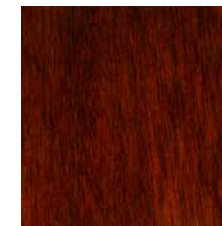


Distinguished by its Chesterfield-inspired tufted back, the Alfred club chair showcases wide paddle arms and a luxuriously deep seat. Antiqued nail-head trim details the regal silhouette, which is upholstered in natural aniline leather and features hand-turned legs crafted from solid beechwood with front-facing casters.

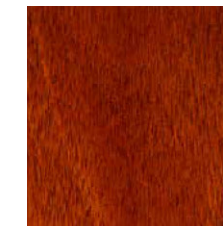
#### Available Wood Finishes



Dark Mahogany



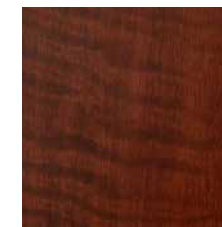
Medium Mahogany



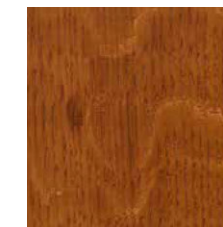
Light Mahogany



Satin Black



Medium European Walnut

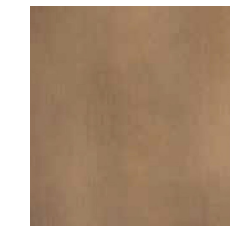


Medium Oak

#### Available Metal Finishes



Chrome



Antiqued Brass

#### AFAFRPOL

**Height:** 34 2/3" / 88 CM

**Width:** 32 1/3" / 82 CM

**Depth:** 37 2/3" / 96 CM

**Weight:** 97 lbs / 44 kg

